

TOYOTA HILUX 2006-2015

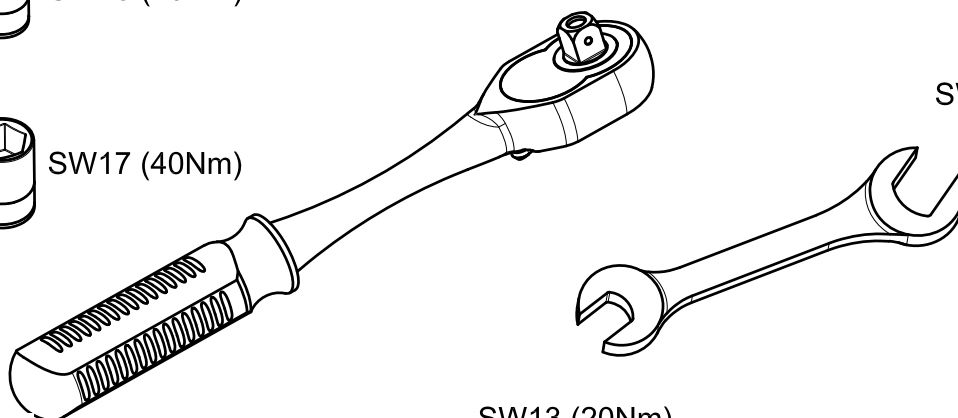
KOD / CODE : 7020DKY111



SW13 (20Nm)

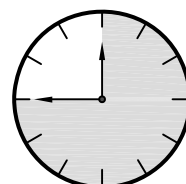


SW17 (40Nm)









SW17 (40Nm)

SW13 (20Nm)



MONTAJ SETİ / INSTALLATION SET

M8x20 ①  x2	M8 ②  x2	M8 ③  x2	M8x20 ④  x8	M10x25 ⑤  x12	M10 ⑥  x12
---	--	--	---	---	--

1. M8x20 ANAHTAR BAŞLI CİVATA / M8x20 KEY HEAD BOLT

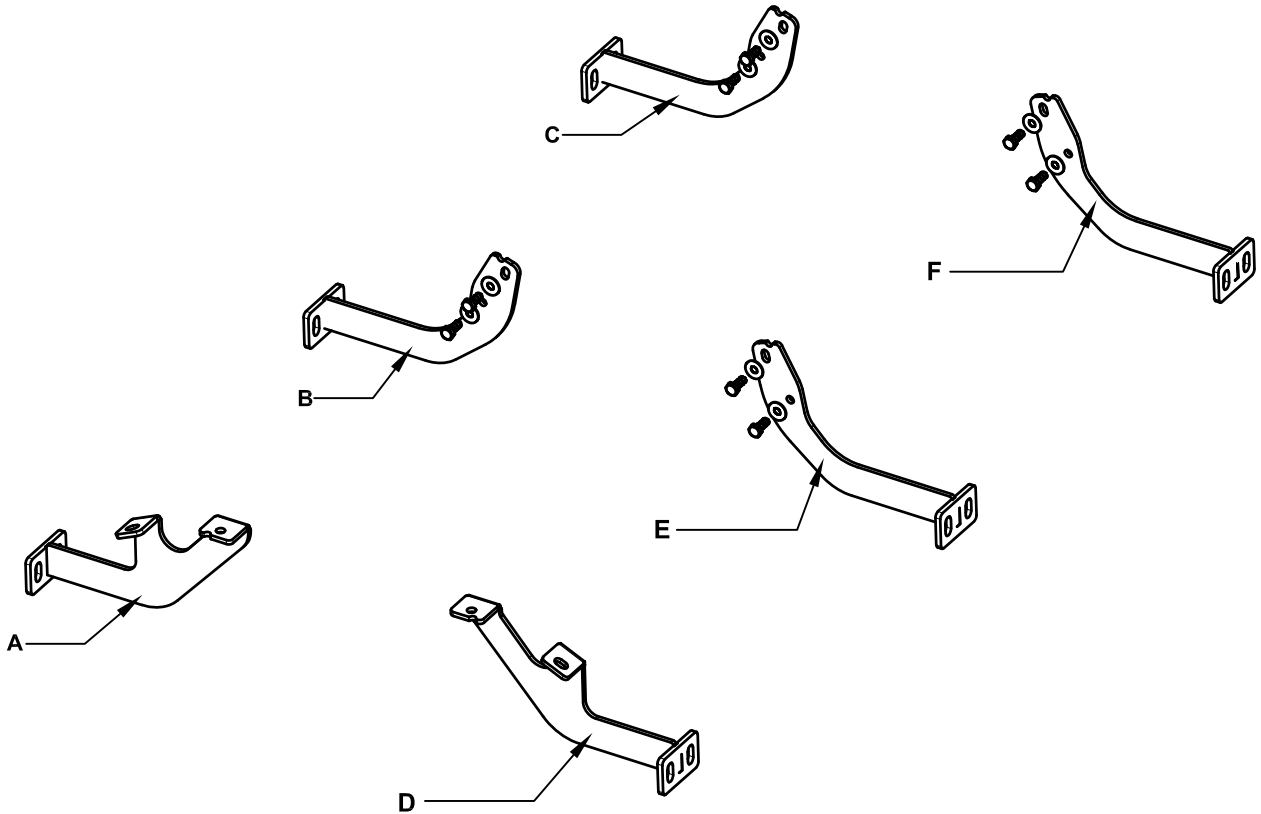
2. M8 SOMUN / M8 NUT

3. M8 PUL / M8 WASHER

4. M8x20 CİVATA / M8x20 BOLT

5. M10x25 CİVATA / M8x20 BOLT

6. M10 SOMUN / M10 NUT



BRAKETLER / BRACKETS

A. 7020DKY R F / SAĞ ÖN BRAKET / RIGHT FRONT BRACKET

B. 7020DKY R M / SAĞ ORTA BRAKET / RIGHT MIDDLE BRACKET

C. 7020DKY R R / SAĞ ARKA BRAKET / RIGHT REAR BRACKET

D. 7020DKY L F / SOL ÖN BRAKET / LEFT FRONT BRACKET

E. 7020DKY L M / SOL ORTA BRAKET / LEFT MIDDLE BRACKET

F. 7020DKY L R / SOL ARKA BRAKET / LEFT REAR BRACKET

Fig. 1



ARAÇ ÜZERİNDEKİ CİVATALARI SÖKÜNÜZ
REMOVE THE BOLTS ON THE VEHICLE



LF

Fig. 4



BRAKETİ CİVATALAR İLE MONTAJLAYINIZ
INSTALL THE BRACKET WITH BOLTS



LM

Fig. 2



BRAKETİ CİVATALAR İLE MONTAJLAYINIZ
INSTALL THE BRACKET WITH BOLTS



LF

Fig. 5



BRAKETİ CİVATALAR İLE MONTAJLAYINIZ
INSTALL THE BRACKET WITH BOLTS



LR

Fig. 3



ARAÇ ÜZERİNDEKİ CİVATALARI SÖKÜNÜZ
REMOVE THE BOLTS ON THE VEHICLE



LM

Fig. 6



BRAKETİ CİVATALAR İLE MONTAJLAYINIZ
INSTALL THE BRACKET WITH BOLTS



LR



MONTAJ ŞEMASI / INSTALLATION SCHEME

